

Evergreen Middle
School

**School Wide
Expectations
Relaunch**



EVERGREEN MIDDLE SCHOOL
GRIZZLIES

Welcome

The second semester is here, and we are grateful to be in our new building.

Thank you for supporting Evergreen during this time of transition.

Need for relaunching/revisiting schoolwide expectations

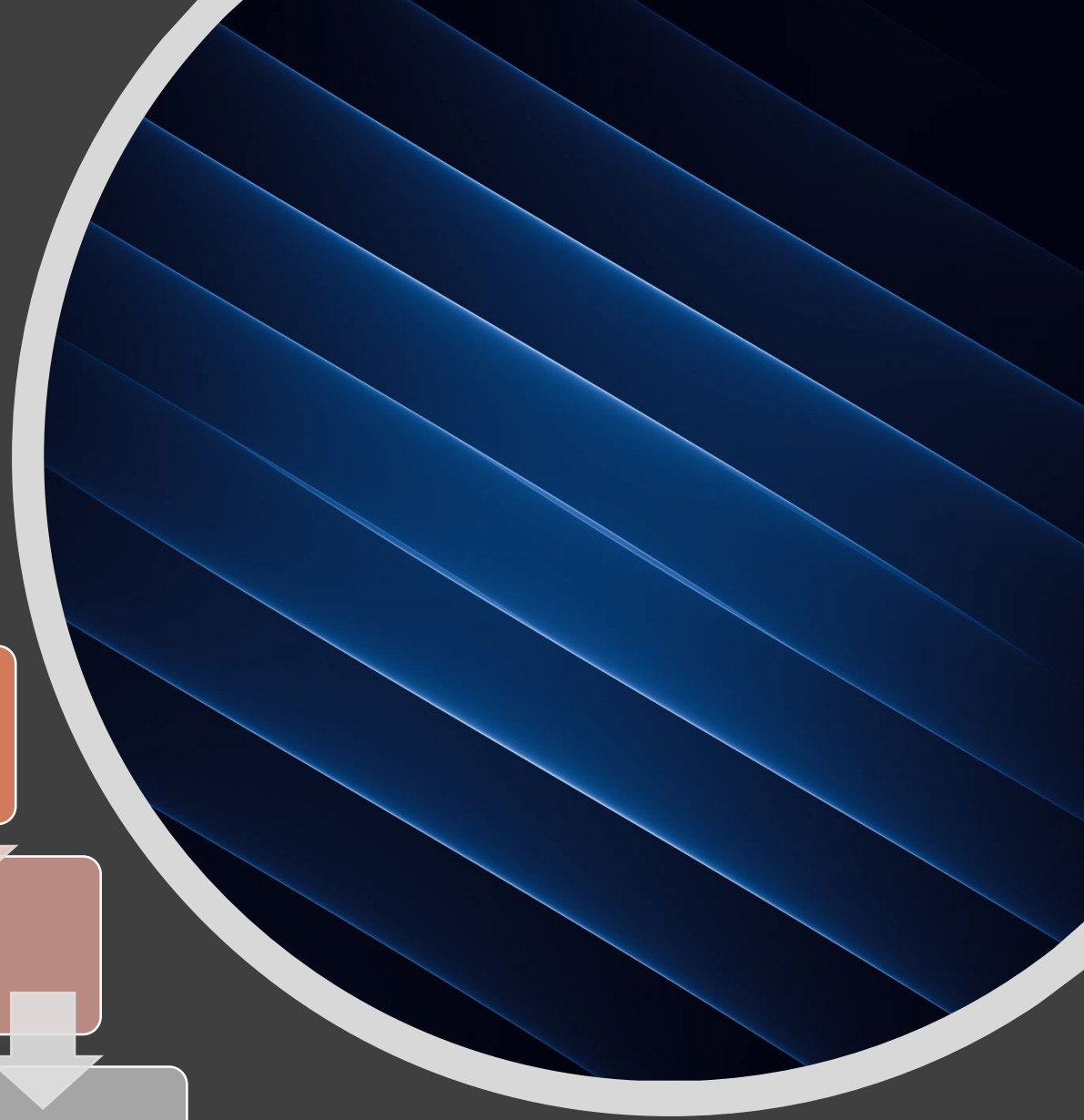
Agenda

We are going to talk about systems,
concerns and solutions for

Hallways During Class Time

Transitions/Supervision

Lunch Time



Hallways During Instruction

System	Concern	Solution	Key steps	Success Outcome
<ul style="list-style-type: none"> • Hallways during instruction • <u>Staff Accountability:</u> • Checklist and personal follow up • <u>3 minutes...</u> 	<p>Over the two days district was here: 1-3 period, very few students out of class roaming, after lunch, this number increased significantly</p>	<ul style="list-style-type: none"> • 10 x 10—all students can't leave classroom— • REVOKE passes from classrooms for the next month. • Weekly pass—two passes a day for the whole day outside of the passing period • Dean, AP, Principal, hall monitors, if emergency will need an escort • Relaunching hallway color coded lanyards. You may not use your own pass 	<ul style="list-style-type: none"> • Office staff will make passes and pass them out during advisory • PBIS will incentivize those that don't use the passes • Office staff and admin will take snap shots of how many students are in the hallways each period and send it to staff half -way through the day and again at the end. 	<ul style="list-style-type: none"> • Increase instructional time in the classroom • Decrease hall congestion and hall noise • Reduce conflicts <p>There will be a 0-5 scholars in the hall at the start of each period and zero scholars during the 10x10 starting by Monday 3/7/2022</p>

Transitions and Supervision

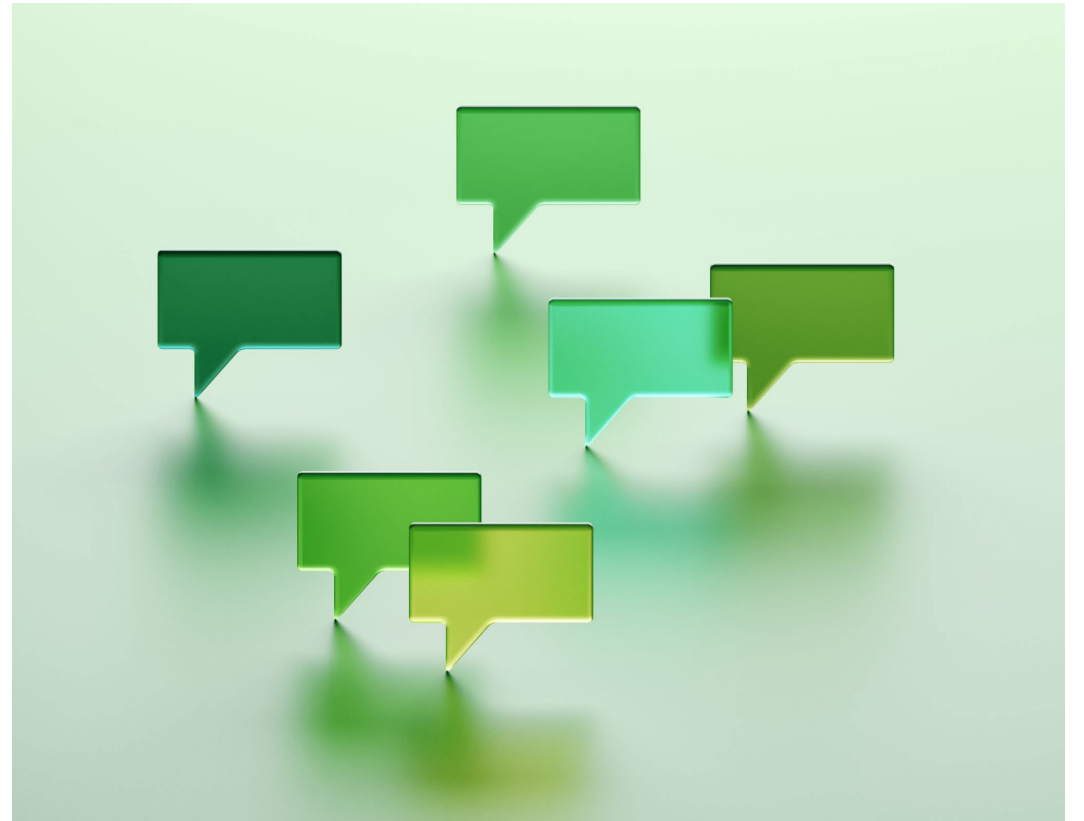
System	Concern	Solution	Key steps	Success Outcome	When	Communication
Transitions	<ul style="list-style-type: none"> Bell-to-bell instruction Students not in class after the bell (42 students after the first bell) 1st floor: 0-3 adults supervising 2nd floor: 2-3 adults supervising 3rd floor: 4-8 adults supervising *as day goes on, it gets worse* 	<ul style="list-style-type: none"> All teachers need to be at the doors at start and end of period Even at expense of not doing an explicit lesson to launch Classroom entry routines will be consistent 	<ul style="list-style-type: none"> Admin will be monitoring start and end of period Regular debriefing meetings will be held at 7:20am Create PBIS incentives for staff to give to students Update sub plans so guest teachers know ALL systems 	<ul style="list-style-type: none"> Subs feeling supported and wanting to come back Less scholars in the hallway More instructional time Increased PBIS rewards for students <p>100% of supervisors will be in their designated location at their designated time actively supervising (bathrooms, halls, stair well) by 2/24/2022</p>	2/24/22	<ul style="list-style-type: none"> Admin will meet with supervisors by 2/25/22 Share staff the supervision schedule

Lunchtime

System	Concern	Solution	Key steps	Success Outcome	When	Communication
<p>Lunch Time</p> <p>We cannot have a grade level lunch this year but will next year</p>	<ul style="list-style-type: none"> Lack of supervision roaming after 1st lunch 2nd lunch, 1 visible adult outside , 1 inside (admin) 3rd lunch, two teachers sitting at the table outside of bathroom not actively supervising 	<ul style="list-style-type: none"> Teachers take students to the cafeteria—walk them –hot lunch line up and cold lunch Assign tables Staggered dismissal to lunch by teacher Once students are out, they stay outside 	<ul style="list-style-type: none"> Regular debriefing meetings will be held Lunch Supervisors needed for 2nd lunch Active Supervision needs to take place in cafeteria and cafeteria bathroom Admin will create half sheet with adult behavior for each supervisor for each location what does it look like what does it sound like? Create PBIS incentives for staff to give to students Update sub plans so guest teachers know ALL systems Advisory lessons to introduce this 	<ul style="list-style-type: none"> Subs feeling supported and wanting to come back Less scholars in the hallway More instructional time Increased PBIS rewards for students <p>100% of supervisors will be in their designated location at their designated time by 2/24/2022</p>	2/28/22	<ul style="list-style-type: none"> Meet with supervisors by 2/24/22 Share staff the supervision schedule 2/24/22

Let's Be Honest

- School Climate and Culture
- How We Speak to and Treat Each Other
- Other Forms of Communication
- Questions/Concerns





Thank you

Remember, nice matters and we are all little drops
of water that can form an ocean.

We got this Grizzlies