

# Brigadoon Elementary School

## GOAL 2

WHOLE CHILD

### Attendance

**74%**

Attended 90% or more of instructional time



### "I Feel Safe at School"

**82%**

Responded "Almost always true" or "Often true" on CEE survey



### Scholar-Led Conferences

**100%**

Attended an SLC in spring 2018



### Discipline

**96%**

Did not receive a suspension



## SCORE CARD

2017-18 DATA

3601 S.W. 336th St.  
Federal Way, WA 98023  
253-945-2400



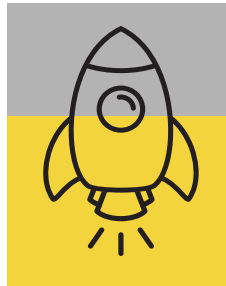
## GOAL 1

THE EARLY YEARS

### Kindergarten Readiness

**60%**

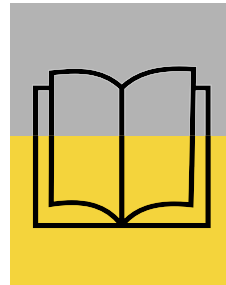
Incoming kindergarteners who met 6 of 6 WaKIDS domains



### IRLA

**54%**

K-3rd graders "on-target" on Independent Reading Level Assessment (IRLA)



### iReady Diagnostic Assessment

**60%** On/above level in Reading



**61%** On/above level in Math



## OVERALL SCORE

**Achieving**

KEY

Excelling

Achieving

Developing

Emerging



## FEDERAL WAY PUBLIC SCHOOLS

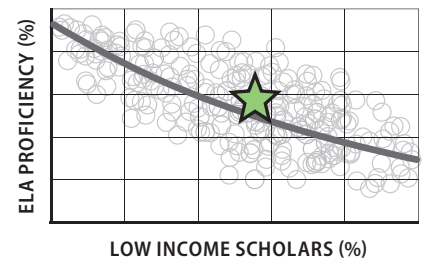
**Our Mission:** In an environment of high expectations, high support, and no excuses, the staff of Federal Way Public Schools will continually learn, lead, utilize data, and collaborate to ensure our scholars have a voice, a dream, and a bright future.

## SBA PERFORMANCE

PEER COMPARISON

### English Language Arts

**57%** Proficiency by low income scholar population with statewide trend line



### Math

**57%** Proficiency by low income scholar population with statewide trend line

